

649NV-48



649NV-CONVKT



649-ADP

### Specifications

<b>DC Loop Current:</b>	0 – 100mA
<b>DC Loop Voltage:</b>	0 to -60V
<b>DC Resistance:</b>	≤ 25 Ω
<b>Insertion Loss:</b>	< 0.5dB
<b>Attenuation Distortion:</b>	< 1.0dB
<b>Delay Distortion:</b>	< 200us
<b>ADSL Band Attenuation:</b>	> 65dB @ 30kHz – 300kHz > 55dB @ 300kHz – 30MHz
<b>Return Loss:</b>	6dB ERL, 5dB SRL-Low, 3dB SRL-High
<b>Longitudinal Balance:</b>	> 57dB
<b>Lead Wire Length:</b>	12 inches

### Product Information

#### Suttle

#### Part Number

#### Description

649NV-48	1-line VDSL2 NID splitter, RJ14 test jack (pair 1 = network, pair 2 = premise), 3 x single-pair tool-less toggles for voice, 1 x single-pair tool-less toggle for data (purple)
649NV-CONVKT	Conversion ground bar and adapter cradle used to install 649NV-48 & protection module in Siecor NI-2006-13L11CT, NI-2006-13L
649-ADP	Adapter cradle and auxilliary clip used in Siecor NI-2006-13L11CT, NI-2006-13L to install 649-NV-48

### Description

The FutureLink™ VDSL NID splitter is designed to provide POTS separately from VDSL signals at the point of entry to a subscriber. The Ring Trip Mitigation feature allows uninterrupted IPTV services during phone calls. Its unique tool-less technology is designed to fit inside most NIDs.

A toggle design allows three pair tool-less voice distribution and one pair tool-less data distribution. Clear toggles allow the installer to clearly see that the connection has been established. The splitter supports all ADSL and VDSL2 technologies up to 30 MHz (30a Profile).

### Features

- Tool-less capability with easy viewing for proper connections
- Front facing IDC wire entry holes for ease of insertion
- Accepts 22-26 AWG wire
- Minimal termination force required for each wire pair
- Audible click toggle upon installation
- Convenient mounting for most NID styles
- Ring Trip Mitigation for superior IPTV delivery
- Cradle detaches and allows placement on premise walls separate from NID
- Compatible for ADSL to VDSL2 technologies up to 30MHz (30a profile)

### Compatible with a variety of NIDs including:

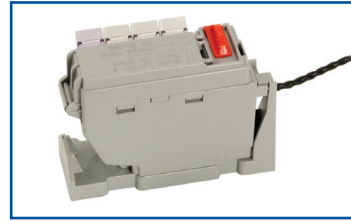
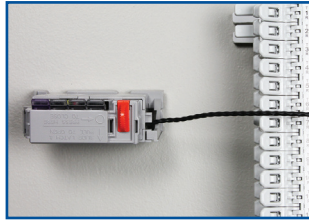
<b>Corning:</b>	7600 Series, 9600 Series, UNI-3056-11U2, UNI-30EQ3-13U1, UNI-30K3, UNI-30K6, NI-2006-13L11CT, UNI-30C3-13U1, UNI-30C6-13U1
<b>Tyco-Keptel:</b>	SNI4600
<b>AFL:</b>	SNI-760
<b>Siecor:</b>	NI-2006-13L11CT, NI-2006-13L

### Testing

<b>TR-127 (Ring Trip Mitigation):</b>	Approved
<b>GR-3167:</b>	Compliant
<b>FCC:</b>	Approved



### Application Diagrams



### Premise Application

- Remove cradle from module.
- The cradle may be attached to a premise backboard with two flathead screws. Attach the cradle close to the 66 block so that the 12" tail from the module can reach.
- Snap the module into the cradle and attach the network leads to the connector block for the Telco feed.
- Data and voice jumpers can be run from the module to the proper distribution connections.

### Testing Procedure

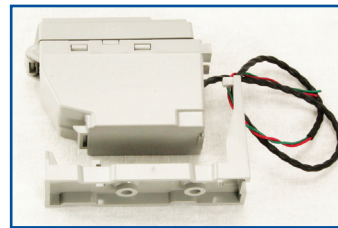
- Install 649NV module, terminate all network and premise connections.
- Use a test set with a 6 position, 4 conductor RJ plug.
- Open cover, disconnecting network input, and insert test set into the "TEST" jack.
- Test the line for shorts or opens using L1 (center pair of RJ contacts).
- Test the bridged POTS drops (up to 3 premise connections) for shorts using L2 (outer pair of RJ contacts).
- To test for open circuits in the bridged POTS drops; close the 649NV module cover completely, plug test set into user interface jacks in the premise.
- To test for shorts or opens on the data port; close the 649NV module cover completely, plug test set into use interface jack in the premise.

### Mounting Instructions (with cradle)

The cradle comes attached to the splitter in shipping.

First, make sure the network leads out of the splitter are facing the TELCO side of the NID.

Second, tilt the attached splitter and cradle down towards the right side of the NID slot and rock the left side down into position.



### Mounting Instructions (without cradle)

The cradle comes attached to the splitter in shipping.

First, detach the cradle from the splitter by pulling back on the cradle arm from the splitter.

Second, tilt the splitter down to the right so that the tab beneath the splitter slides under the knob fixed on the NID.

Lastly, push the left side of the splitter down while snapping the NID arm tab into a latching position with the splitter.

To view a demonstration video, visit the Suttle website ([www.suttleonline.com](http://www.suttleonline.com)) and select the video area under the support tab.

If you need additional training please call Customer Service at 1-800-852-8662.